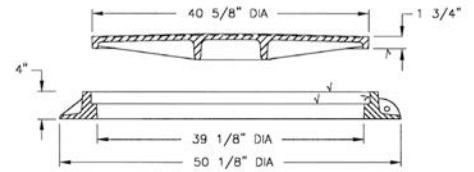


### 430 FRAME & COVER

Heavy duty  
Vertical and horizontal machined surfaces



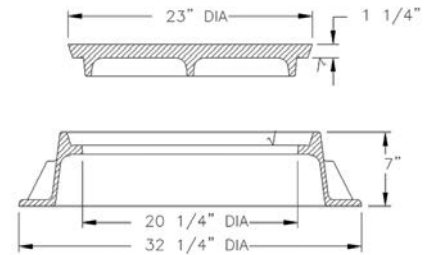
### 1000 FRAME & COVER

Heavy duty  
Machined bearing surfaces

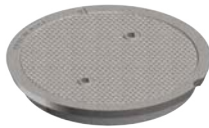
- Options
- Solid or vented covers
- Custom logo covers
- Special lettered covers
- Watertite assembly
- Adjusting risers
- Gasket seal covers
- Type E outer cover and Type F 8" diameter inner cover
- 4" height frame — 1000Z1
- Stackable frame



Type A solid cover 1 1/2" dia. flat bosses on cover face illustrated



**Type B Vented Cover**  
20 – 1 1/4" dia. holes



**Type C Vented Cover**  
2 – 1" dia. holes



**Type M Radial Flat Grate**  
Approx. 140 sq. in. open area



**Type N Oval Grate**  
Approx. 115 sq. in. open area  
2 1/4" height above frame  
"DUMP NO WASTE!" lettering and trout image



**Type O1 Beehive Grate**  
Approx. 140 sq. in. open area  
5 1/4" height above frame  
"DUMP NO WASTE!" lettering and trout image



**Type O2 Beehive Grate**  
7" height above frame

Available Frames for 1000 Covers and Grates

Catalog Number	Base Flange Diameter	Frame Height
1000Z1	32 1/4	4
1000	32 1/4	7
1010Z	32 1/4	7
V-5665	34 13/16	7 1/4

Note: All dimensions are in inches.

Supplied By:



877-903-7246

www.trenchdrainsupply.com